



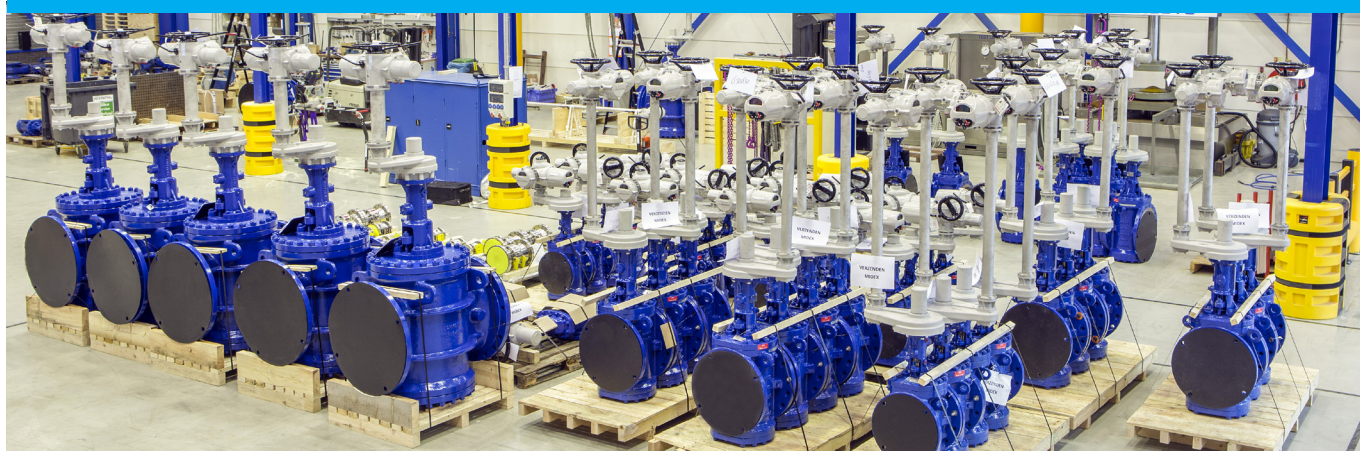
ERIKS Valves & Instrumentation

know-how makes the difference

ERIKS

ERIKS is your place to be

If you are looking for high-quality from reputable manufacturers, ERIKS is the place to be. ERIKS offers a wide range of DIN and ANSI valves and accessories. Many of our products are available from stock and can be adjusted to your specific wishes in our local workshop. For example valves can be assembled with actuators, positioners, limit switches etc.

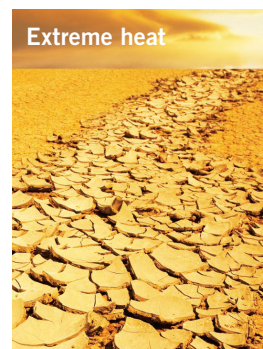


Whether supplying valves for a new plant or for refurbishment of existing equipment, ERIKS is committed to provide the solution that fits around your needs. Partnering with ERIKS will ensure you high quality material, application know-how and a service oriented approach.

Our business incorporates numerous group companies in multiple countries around the globe. We have a dedicated local team with national stocks and the support of worldwide ERIKS network, so you can get the parts you need, when you need them.

Our hallmark is quality. From design to testing; from supply to after-service; from manufacturing to innovation, ERIKS is entirely focused on providing you, the customer, with excellence in all that we do.

We ensure that semi-conductors, drilling companies, vessel repairers, (petro)chemical plants, utility suppliers, food manufacturers, pharmaceuticals and other key industries function effectively by supplying only the best materials available on the market.



ERIKS is committed to keeping your site at full production

Our aim is to build long-term working relationships so that you get the product you want, when you want it, at the right price and with superb services. Our extensive stocks and flexible logistics systems can provide you with considerable savings.



Quick supply and valve automation

We hold extensive stocks of valves and instrumentation, that can be dispatched same day to meet your requirements. ERIKS ensures you of the highest level of availability to keep your operation working.

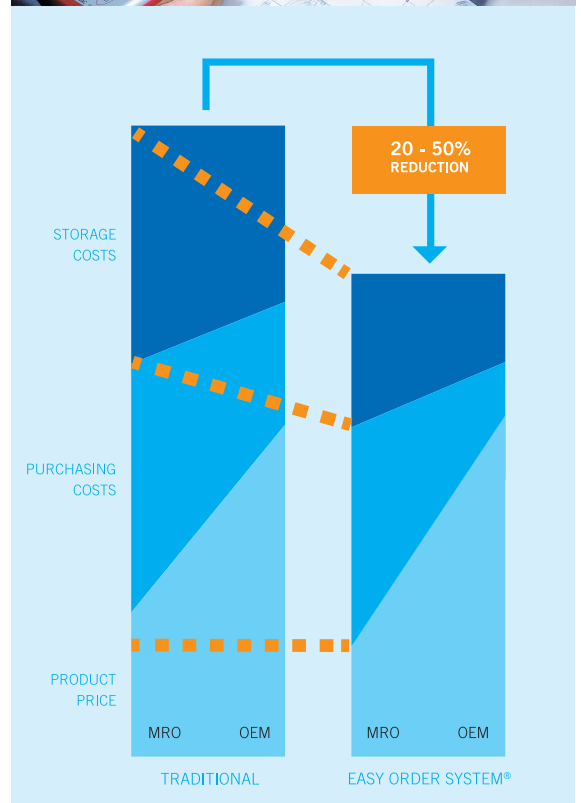
With over 75 years of experience in the valve business, ERIKS has all the knowledge needed for valve automation. In our state-of-the-art workshop our well-trained technicians assemble and test valves with all kinds of automation accessories.



Supply chain solutions

- Are you planning to reduce your procurement costs?
- Do you want to reduce your Total Cost of Ownership once and for all?
- Are you looking for a solid partner who can help you achieve these goals?

Then we would like to welcome you to the ERIKS Easy Order System®



Ball valves



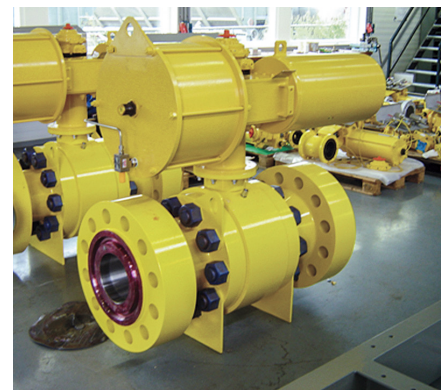
Superior valve solution with wide-ranging applications

Ball valves take a leading role in the valve industry. The high flow capacity coupled with being very simple to mechanise makes ball valves ideal for many applications where an open/close facility is required.

ERIKS supplies ball valves for all uses ranging from brass valves suitable for simple application to flanged stainless suitable for corrosive media. Special valves can be supplied on request.

Ball valves have many advantages

- Able to control high-pressure, high-flow rates and high-temperature
- Simple and high-quality construction
- Excellent price/quality ratio
- Broad applicability
- Maintenance friendly



ERIKS COMMON RANGE OF BALL VALVES

Brand	ECON, AbK, FORCE, Worcester
Type	General, floating, trunnion mounted
Body	1-piece, 2-piece, 3-piece, multi-port
Connection	NPT, BSPP, BSPT, DIN/ASME flange, butt weld, socket weld
Pressure rating	PN 10/40; ANSI 150/1500
Body material	Forged/cast stainless steel, carbon steel, brass, bronze, alloys
Seat	PTFE, nylon, metal, PEEK, FKM, NBR, POM, graphite
Size	1/2" - 52"; DN 15 - DN 1200
Flange finish	RF, RTJ

Gate & globe valves



Versatile, easy-to-use valves on which you can build

Gate and globe valves are suitable for all kinds of process applications. These valves are suitable for all types of media, such as oil, gas, steam and corrosive liquids, making them a versatile selection.

Gate and globe valves are a good choice for applications that do not need to be frequently turned on or off. Manufactured from a variety of materials making them suitable for all types of media and these valves can be modified to customer's requirements.

Each valve has its own advantages

- Gate valves are easy-to-use, have minimal pressure loss, high flow rates and ability to seal tightly
- Globe valves has quick acting design, excellent and precise throttling ability for high pressure systems



ERIKS COMMON RANGE OF GATE AND GLOBE VALVES

Brand	ECON, Smith
Type	General, bellows sealed, Y type, pressure sealed bonnet
Connection	NPT, BSPP, DIN/ASME flange, butt/socket weld, DIN/ASME wafer type
Pressure rating	PN 10/40; ANSI 150/4500
Body material	Forged/cast carbon/stainless steel, brass, bronze, cast, ductile cast iron, alloys
Sealing	Bronze, graphite, NBR
Size	Forged steel 1/2" - 2", cast steel 2" - 48", Bronze 1/4" - 4"
Flange finish	SW, RF, RTJ

Check valves



Reliable self-activating valves

Check valves have the purpose to prevent process flow from reverting in the system which could damage equipment or upset the process. Check valves are installed in virtually every industry.

Check valves, like gate and globe valves, are suitable for all industrial process applications. Our check valves are designed in piston, ball and swing types.



The silent check valve

Dual-plate check valves

- All purpose non return valve that is stronger, lighter and smaller than the conventional check valve, offers the twin advantages of no water hammer and non slam simultaneously
- Wafer type in sizes 2" - 12"
- Pressure rating: ANSI 150/1500



ERIKS COMMON RANGE OF CHECK VALVES

Brand	ECON, Smith
Type	Piston, ball, swing, dual plate
Connection	NPT, BSPP, DIN/ASME flange, butt/socket weld, DIN/ASME wafer type
Pressure rating	PN 2.5/40; ANSI 150/600
Body material	Forged/cast stainless steel, brass, bronze, cast, ductile cast iron, alloys
Sealing	Bronze, graphite, NBR
Size	Stainless steel 1/2" - 2", cast steel 2" - 48", Bronze 1/4" - 4"
Flange finish	SW, RF, RTJ

Butterfly valves



Compact design and quick operating valve with broad applicability

The compact design and the suitability for high flow rates make butterfly valves a high valued solution for many industrial applications.

Through the simple construction and the great variation in materials, butterfly valves are broadly applied for various media such as water and air, but also chemical and corrosive media. Butterfly valves are used for open/close or simple regulating purposes.

The advantages of the butterfly valve

- Quick acting capability
- Broad applicability, suitable for neutral and corrosive media
- On/off and throttling design
- Compact, lightweight design
- Low pressure loss
- Maintenance friendly and easy-to-use



ERIKS COMMON RANGE OF BUTTERFLY VALVES

Brand	ECON
Type	Centric, double offset, triple offset, metal seated, double flanged
Connection	Wafer type, monoflange type, lug type, double flange type
Pressure rating	PN 6/40; ANSI 150/600
Disc material	Bronze, stainless steel, cast, ductile cast iron, die cast steel, alloys, PTFE/FKA liked
Lining	Bonded or replaceable rubber, PTFE, EPDM
Size	2" - 64"; DN25 - DN3000
Flange finish	RF, DIN/ISO

Diaphragm valves



Reliable solution for leakage free and trouble free valve operations

Diaphragm valves are especially suitable for aggressive media and 100% shut-off operation.

Diaphragm valves have evolved to handle more fluids, gases, solids, and powder than any other type of valve. A wide choice of materials are available and a flexible range of operating methods have been developed to satisfy your needs.



Diaphragm valve advantages

- 100% shut-off tight
- Suitable for chemical and corrosive media
- Resistance to corrosion, abrasion, contamination
- Trouble free operation, easy-to-use
- Maintenance-friendly
- Minimal pressure loss

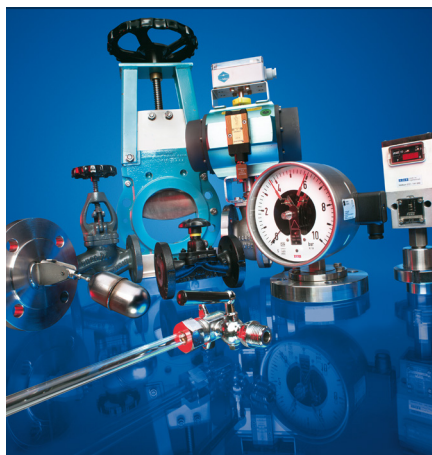
The high-performance valve for aseptic and sanitary processes

Saunders HC4 diaphragm valves

- Saunders HC4 diaphragm valves and machined block valves
- Maximum product purity and integrity
- Fully complies with all international standards for toxicity and purity as defined by regulatory bodies such as FDA, USP and ISO

ERIKS COMMON RANGE OF DIAPHRAGM VALVES

Brand	Saunders IDV
Type	Weir, straight-through
Connection	JIS, ANSI, NPT, BSP, DIN
Pressure rating	ANSI 125/150; JIS 10(k)
Body material	Bronze, gunmetal, cast iron, SG iron, stainless steel
Diaphragm	Nitrile, Butyl, EPDM, Natural Rubber, PTFE
Lining	Hard rubber, PP, Butyl, EFE, PVDF, PFA, glass, unlined
Size	1/2" - 16"; DN 15 - DN400



ERIKS options are many

Next to our ball, gate, globe, check, butterfly and diaphragm valves, ERIKS offers an extensive range of other valves with a large variety of materials, measurements and pressure stages.



For critical applications where zero-leakage is required Double block & bleed valves (VE®)

- Substitute the principle of two in-line valves with a drain and or bleed valve
- Particularly suitable for tank storage, multi-product manifolds, metering stations and aviation & marine fueling stations
- Created an optimum seal without causing any abrasion and wear



Compact valve that excel in extreme pressure applications Safety relief valves (ECON and Seetru)

- Safeguards your installation against extreme pressures
- Up to 250 °C and 500 bar
- Wide variety of connections; NPT, BSP, flanged
- Body material: bronze, brass, stainless steel



Protect your process equipment Y-strainers (ECON)

- Most common strainer type, suitable for many industrial applications
- Connection: BSP female threaded, DIN flanges, ASME flanges, socket/butt welding
- Pressure rating: PN 6/40; ANSI 150/600
- Body material: bronze, carbon steel, stainless steel, cast iron, ductile cast iron

Looking for the best solution that suits your specific needs?

ERIKS offers a complete range of valves to suit every demanding application. Many valves are available on short lead times from our local distribution center.



- = Superior
- = Good
- = Fair
- = Poor

Valves

Service features

	Ball	Gate	Globe	Check	Butterfly	Dia-phragm
On/off applications	Superior	Good	Good	Good	Good	Good
Control applications	Fair	Fair	Good	Fair	Fair	Fair
Ability of leak tight shut-off	Superior	Fair	Good	Superior	Superior	Superior
Resistance to abrasion/erosion	Fair	Fair	Fair	Good	Good	Superior
Resistance to corrosive media	Good	Good	Good	Good	Superior	Superior
Quick acting capability	Superior	Fair	Fair	Superior	Superior	Good
Minimal pressure loss	Superior	Good	Fair	Superior	Superior	Superior
Non-turbulent flow path	Superior	Good	Fair	Superior	Superior	Superior
Temperature range	Fair	Good	Good	Good	Fair	Fair
Pressure range	Superior	Good	Good	Superior	Fair	Fair
Vacuum capability	Superior	Fair	Good	Good	Superior	Superior
High purity	Superior	Fair	Fair	Good	Fair	Superior
Weight/size ratio	Good	Fair	Good	Good	Superior	Good
Maintenance friendly	Good	Good	Good	Good	Fair	Superior

Information provided is indicative only. Additional considerations such as material, sizes, pressure classes and constructions must be considered. Our sales team will be delighted to provide detailed, technical advice.

ERIKS eases your process control

ERIKS offers a broad range of instruments for measuring, monitoring and controlling level and flow. All are supplied according to international standards. Most products can be adjusted to your specification.



Ensure precision with valve automation

Actuators

- Actuators play a major part in automated process control
- Valve actuators with accessories as limit switches, valve positioners etcetera take an increasing place in process and operating systems
- ECON and AMG pneumatic and electric operated valve actuators for all type of valves available



For applications where remote control is desired

Solenoid valves

- Solenoid valves are used to control the flow liquids, gases and steam in a positive, fully closed or fully open mode
- Offers fast and safe switching, high reliability, long service life, good medium compatibility, low control power and compact design



Many options to ensure fluid control

Measuring and control components

- Flow and level measuring and control components; mechanical and electronic instruments such as level gauges and gauge integral switches



Quick & easy inspection throughout your system

Sight glasses

- Transparent tube type to observe the level of liquid
- Flat glasses, domed glasses and reflex glasses
- Connection: BSP, DIN flanges, welded
- Body material: brass, bronze, cast iron, carbon steel and stainless steel

